

CaptureSelect[®]

Protein Purification

Supporting your process



The **Affinity** Experts

CaptureSelect®

Unique Affinity Purification Products

BAC provides CaptureSelect® affinity chromatography ligands and products for discovery, analysis, laboratory preparation,

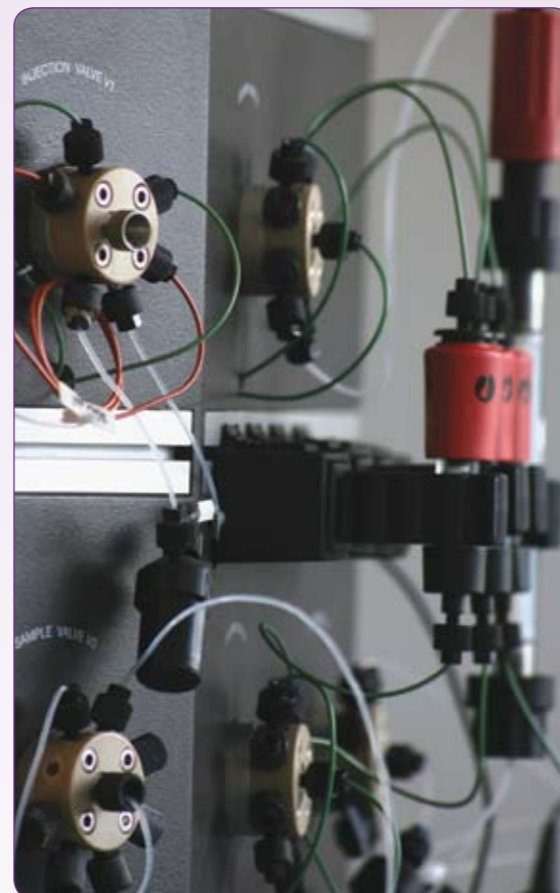
preclinical, QC applications and commercial manufacturing of biotherapeutics. BAC's unique CaptureSelect products, based on a proprietary single domain heavy chain antibody technology, are successfully used for the affinity purification and analysis of a wide variety of commercial and preclinical biotherapeutic compounds. In addition, BAC offers a bespoke service for the development of product and process specific affinity solutions.

CaptureSelect® Protein Purification

CaptureSelect Protein Purification contains a range of products that can be used in affinity chromatography settings to efficiently purify biopharmaceuticals. The opportunity to use a single-step purification process makes these products ideal for consideration in the cost effective production of biosimilars.

Each protein purification product has unprecedented specificity and affinity to its target protein. This enables single-step purification from any source material and ensures sensitive proteins can be eluted under mild conditions. With these protein purification products you can get the specificity, affinity, stability, and elution profile you need to purify your protein of interest.

CaptureSelect Protein Purification products are available as resin slurries and as pre-packed columns, to provide optimal flexibility.



CaptureSelect® Protein Purification

Materials are available as slurries in standard sizes of 5, 10 and 50 ml of resin.

Custom sizes, up to litre scale, are available on request.

CaptureSelect®	Product Code	Applications
Alpha-1 Antitrypsin (AAT)	191.2870	Suitable for plasma derived and recombinant AAT
Antithrombin III (ATIII)	190.3170	Purifies both Alpha as well as Beta ATIII
Fibrinogen (Fib)	191.2910	Suitable for plasma derived and recombinant Fibrinogen
Follicle Stimulating Hormone (FSH)	190.3180	Purifies intact FSH
Human Albumin (HSA)	191.2970	Specific for human serum albumin, suitable for excipient grade HSA and HSA-fusion proteins
Human Growth Hormone (hGH)	190.3160	Suitable for both CHO and as well as <i>E.coli</i> derived hGH
Transferrin (TF)	191.3060	Suitable for plasma derived and recombinant Transferrin
von Willebrand Factor (vWF)	190.3190	Suitable for plasma derived and transgenic applications. Both the monomer as well as multimers are bound in the presence as well as absence of Factor VIII

Other products that are currently in development include affinity resins for production of the following biological compounds: IFN-alpha, IFN-beta, EPO, tPA, GM-CSF, Insulin, Pro-Thrombin, and others. Please contact BAC for updates on timings.

Supporting your process with CaptureSelect® Protein Purification

Detailed information on the individual resin (product sheets, list prices) can be found at www.captureselect.com/shop

To order visit our online web shop or send your purchase order to ligands@captureselect.com or fax +31 356 949 576

Warranty: Protein purification affinity matrices of BAC BV are supplied for research use only and are intended to be used by a technically qualified individual. BAC BV makes no claim of suitability for use of protein purification affinity matrices in applications regulated by the FDA.





CaptureSelect® **Protein Purification** provides:

- True selectivity
- Product-compatible elution
- Single-step purification
- High recovery
- Excellent purity



The **Affinity** Experts

Contact us:

Europe / Asia / Oceania

Remko Clasen
Business Development
remko.clasen@bac.nl

USA / ROW

Bruce Dawson
VP Sales and Marketing
bruce.dawson@bac.nl

BAC BV Head Office

Huizerstraatweg 28
1411 GP Naarden
The Netherlands

info@captureselect.com
www.bacbv.com
www.captureselect.com